
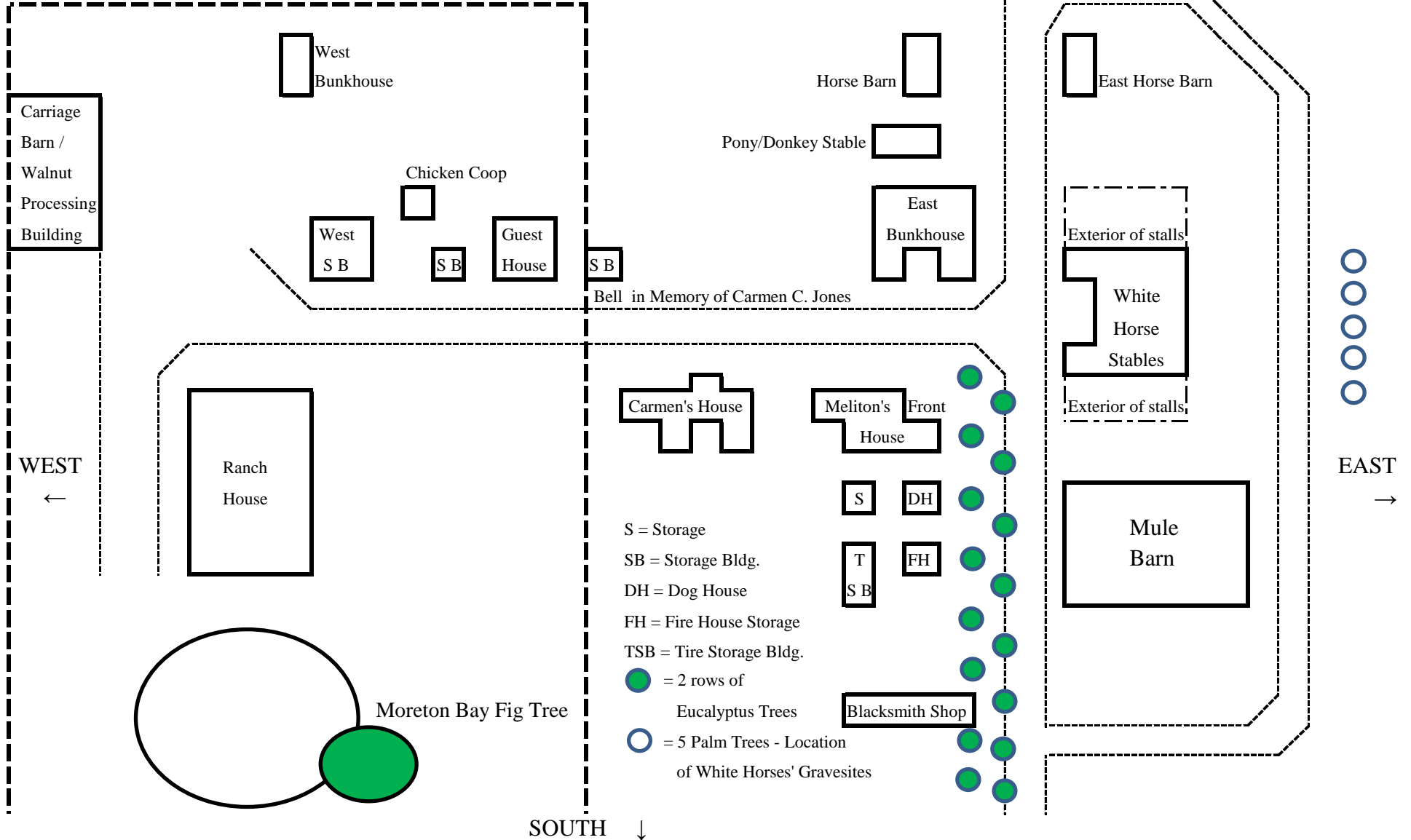
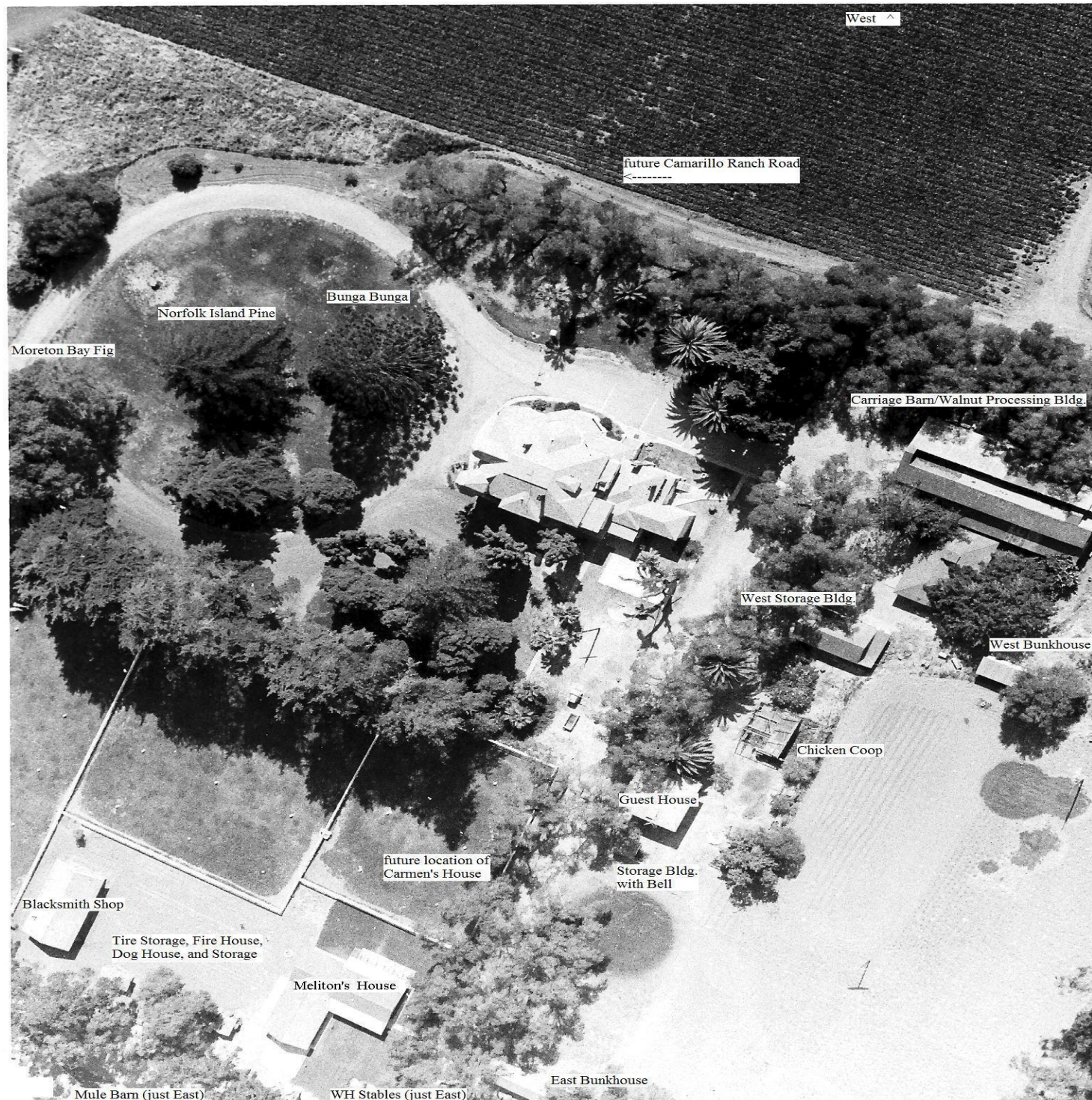


Slaughterhouse 
(located further north than shown here)

3717, 3719, and 3721 E. Mission Oaks Blvd. Residences
are located far north of Slaughterhouse (all 3 on the right side)
(going north, order of houses is 3717, 3719, and 3721)

 = Ranch Property today





West ^

future Camarillo Ranch Road

Norfolk Island Pine

Bunga Bunga

Moreton Bay Fig

Carriage Barn/Walnut Processing Bldg

West Storage Bldg

West Bunkhouse

Chicken Coop

Guest House

future location of Carmen's House

Storage Bldg. with Bell

Blacksmith Shop

Tire Storage, Fire House, Dog House, and Storage

Meliton's House

Mule Barn (just East)

WH Stables (just East)

East Bunkhouse

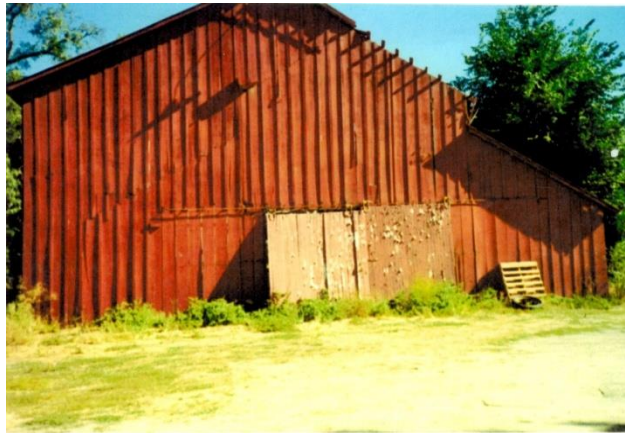


Blacksmith Shop is on the right ↑ ↑
(Mule Barn is just behind and further to the right)

South side of Carriage Barn/Walnut Processing Bldg.
(red structure in rear - left of the Ranch House)



South side of Carriage Barn/Walnut Processing Bldg.



South side of Carriage Barn/Walnut Processing Bldg.



Southeast side of Carriage Barn/Walnut Processing Bldg.



North side of Carriage Barn/Walnut Processing Bldg.



Looking North thru Carriage Barn/Walnut Processing Bldg.



(red structure seen at far end is the large dumpster)

East side of Carriage Barn/Walnut Processing Bldg.



← This is the East side of the Carriage Barn/Walnut Processing Building.

The ladder seen on the far right is leaning on the North side of the building.

Basketball hoop can be seen on far left of photo (this item is also seen in the black and white photo with the horse trailer, and one of the color photos of the South side view). The hoop was used as definitively identifying this structure (vs. another large structure on the property).

West Storage Building (Ranch House is in rear)



West Storage Building (Ranch House at right)



West Storage Bldg. (red door faces Ranch House)



West Storage Bldg. (red door faces Ranch House)



West Storage Bldg. (red door faces Ranch House)



Guest House (Ranch House on opposite side & to far left)



L-R: C. Barn - W. Storage - Guest House - Storage Bldg.

L-R: Guest House - Storage Bldg. w/ Bell - E. Bunkhouse

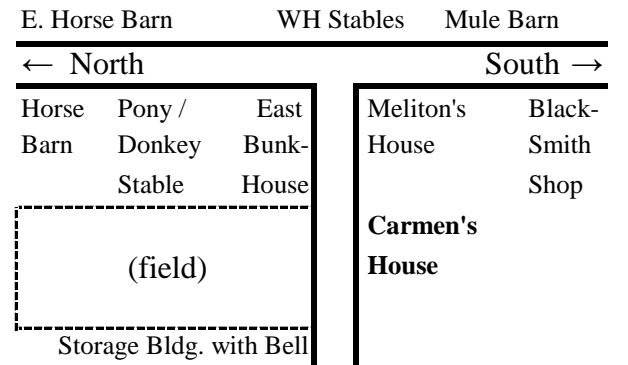
Bell in memory of Carmen Camarillo Jones



L-R: Horse Barn - Pony/Donkey Stable - E. Bunkhouse

L-R: Horse Barn (East one behind it); Pony Stable; WH; E. Bunkhouse

Space reserved for future photo of Carmen's House



Note: East Bunkhouse is **left** corner of "T" dirt path. Not pictured: Meliton's house is **right** corner. At "T" & across the path are WH Stables (Mule Barn to rg. of WH)

Pony/Donkey Stable (rear of E. Bunkhouse to the left)



East Bunkhouse at 'T' in path (WH Stables at path's end)



East Bunkhouse (across path is Meliton's House)



Meliton's House (door faces Mule Barn; rear is Ranch House)



M. Ortiz' house (Meliton with Kevin Kildee & his brother)



L-R: Meliton's House; Blacksmith Shop; Mule Barn



Blacksmith Shop (Meliton's house to the right)



Blacksmith Shop (left side faces 101 Freeway)



Blacksmith Shop (left side faces 101 Freeway)



Blacksmith Shop (left side faces 101 Freeway)



Two rows of Eucalyptus Trees (Mule Barn to rg. behind corn)



Eucal. Trees - Mule Barn on right (corn in front)



Front of Mule Barn (White Horse Stables are visible)



Front of Mule Barn with corn on side



Front of Mule Barn (White Horse Stables are visible)



Front of Mule Barn



Mule Barn (looking North) (Ranch House to far left)



Back of Mule Barn (White Horse Stables are visible)



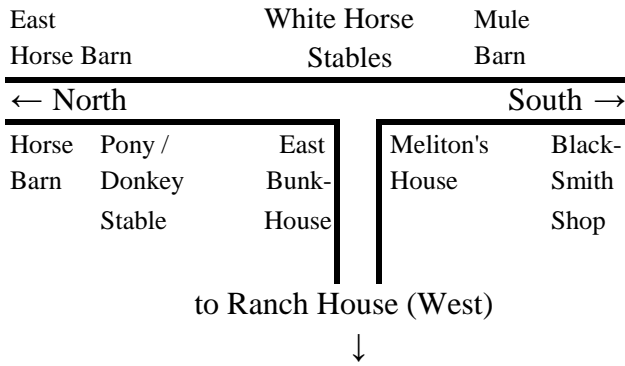
Back of Mule Barn (White Horse Stables are visible)



Back of Mule Barn (White Horse Stables are visible)



Back of Mule Barn (looking Southwest to 101 Fwy)



White Horse Stables (East Bunkhouse to left)



White Horse Stables



White Horse Stables (5 Palm Trees behind it)



Sultan's Gravesite (1918-1935) - Carmen C. Jones



5 Palm Trees - White Horses' Gravesites area



East Horse Barn (modern homes in rear beyond C. Creek)



East Horse Barn



To be identified (maybe Steel Corral and Shed?)



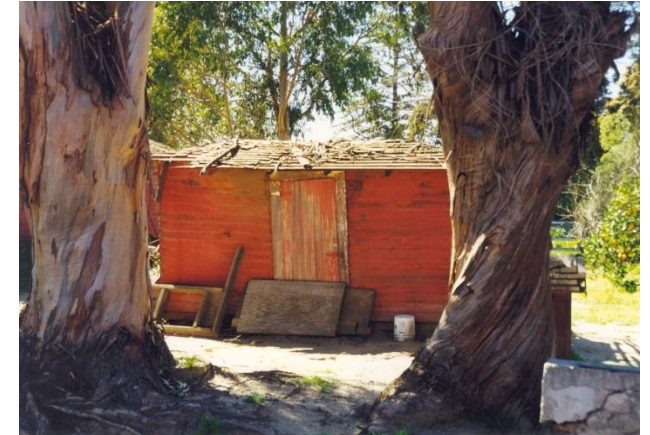
Slaughterhouse (note the item in center of corral)



Maybe the Storage Shed across from Mule Barn



Maybe Storage, & Dog House (far rg.) near Blacksmith Shop



Maybe housing for migrant workers, or residences far north of Slaughterhouse

